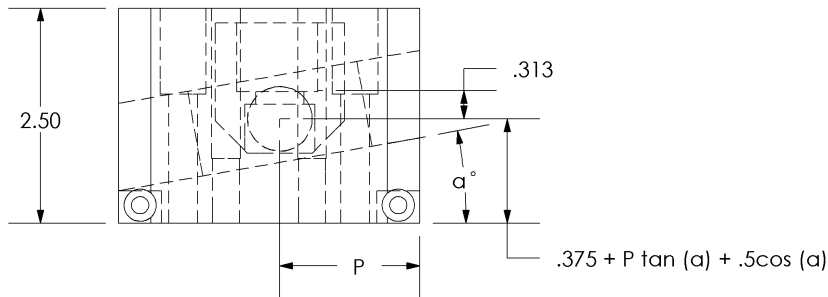
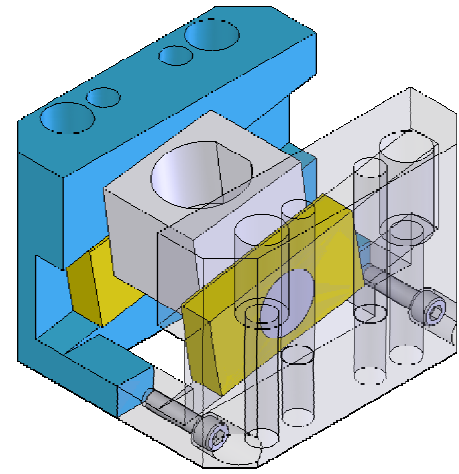
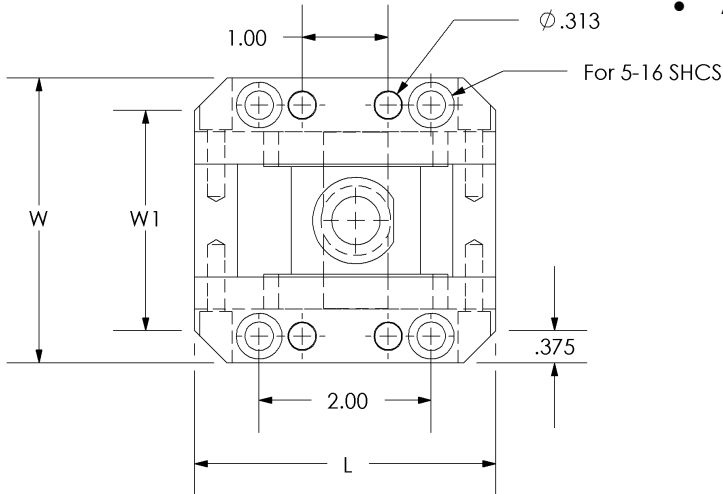


Saves Build Time!

- 0-15 degrees preset angle of travel
- Accommodates lifter rod angles of up to 30 degrees
- Available with or without graphite



Materials: Trunnion and Base: 4140 Rc 28-32; Bearing Block: Aluminum Bronze; with/without Graphite Plugs.

Tolerances: L, W, H: +/- .005; Holes: +/- .005; All Other: +/- .010

G = Graphite; X = No Graphite

Catalog Number: TSA2828 8 G 08

Code

A (0 - 15 degrees)

Lifter rod dia. in 8ths of an inch (6 = 3/4, 8 = 1)

Code	Lifter Rod			Base			Note
	D (dia)	F (flat)	Screw	W	W1	L	
TSA2628	0.75	0.315	3/8	2.939	2.313	3.50	Narrow width
TSA2828	0.75	0.315	3/8	3.312	2.687	3.50	Standard width
TSA2828	1.00	0.440	1/2	3.312	2.687	3.50	Standard width